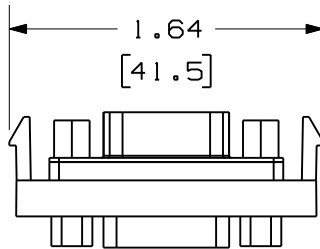


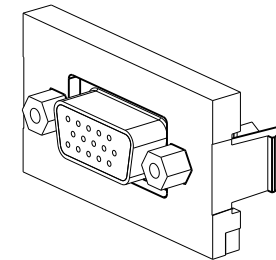
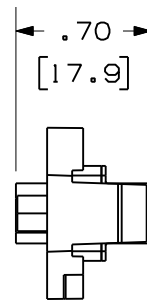
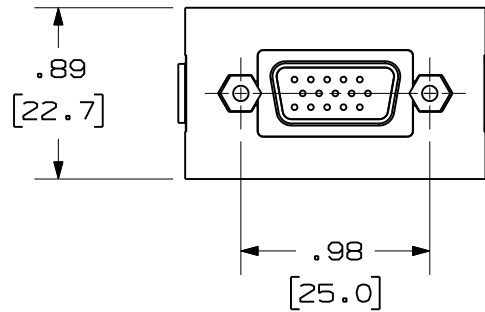
THIS COPY IS PROVIDED ON A RESTRICTED BASIS AND IS NOT TO BE USED IN ANY WAY DETRIMENTAL TO THE INTERESTS OF PANDUIT CORP.

PANDUIT P/N	WEIGHT
CHD15HDC**	.28 LB/10 PCS
IAPHD15HDCWH	(125.9 g/10 PCS)



NOTES:

1. SEE CURRENT CATALOG FOR ADDITIONAL PART NUMBER SUFFIXES TO INDICATE COLOR AND OR PACKAGE QUANTITY.
2. SEE CATALOG FOR COMPLETE LIST OF PARTS APPLICABLE FOR USE WITH THIS PART.
3. DIMENSIONS IN PARENTHESES ARE IN METRIC.
4. PART TO WORK WITH ALL PANDUIT FACEPLATE FRAMES.



MODEL FILENAME		DRAWING FILENAME		SIZE
		M01095AB_DC/02B		A
MINI-COM 15 PIN HIGH DENSITY SVGA 1/3 INSERT COUPLER CUSTOMER DRAWING				
PANDUIT [®] TINLEY PARK, IL 60487			I.I. NUMBER	
			PRODUCT SPEC/ PKG SPEC	
ALL DIMENSIONS ARE GIVEN IN INCHES, UNLESS OTHERWISE SPECIFIED. DIMENSIONAL TOLERANCES ARE: (.X) ± (.XXX) ±.010(.3) (.XX) ±.03(.8) ANGLES ±			ASSY METHOD/ TEST METHOD	
			SCALE	
DRAWN BY JsP		REVIEW DRAWING NUMBERS		PART NO.
DATE 1-26-01		MAT'L		SEE TABLE
CHK'D PBD				DRAWING NO.
				01095-07

REV	DATE	BY	CHK	DESCRIPTION	ECN	R	CUST	SUP	OTH
2	6-6-11	BJN		B. ADDED SUPPLEMENTAL P/N IAPHD15HDCWH	01095-07				
1	2-16-01	JsP	PBD	A. ADDED "C" TO PART NO.	01095-07	PBD	PBD		
R	1-26-01	JsP	PBD	RELEASED TO PRODUCTION.	01095-07	PBD			